

# Part 2 Tutor Training: Effective Facilitation and Relationship Building



NATIONAL STUDENT  
SUPPORT ACCELERATOR

*equalizing access to quality tutoring*

# Effective Facilitation Guidelines

- Establish **group norms**
- Session **culture norms**
  - What **values** should be represented and prioritized in my learning environment?
  - What **statements of fact** do I always want to be true of my learning environment?
  - What would **respectful, inclusive, safe interactions** between students look and sound like?
  - What **rules and standards** do I need in order to uphold these values and encourage these interactions?



# Effective Facilitation Guidelines

- **Group discussion norms**
  - How should students **share**?
  - What does a **quality contribution** look like?
  - How should students **respond** to ideas so that it is safe to share?
  - What should students do while their peers are sharing?
- Apply **behavior re-engagement** strategies
- Before, during, and after sessions



# Building Strong, Academically-Focused Tutor-Student Relationships

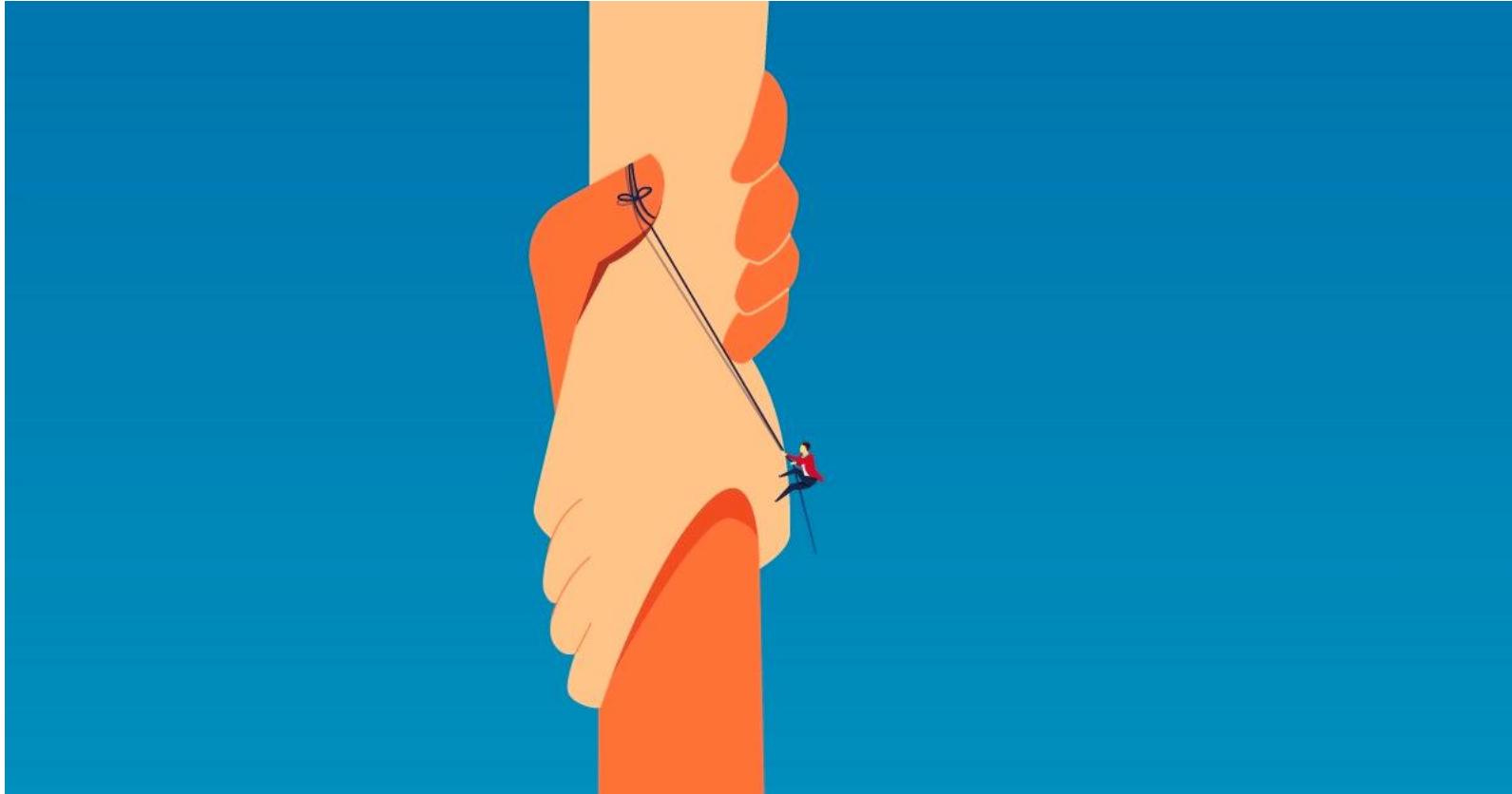
- **Why** do these relationships matter?



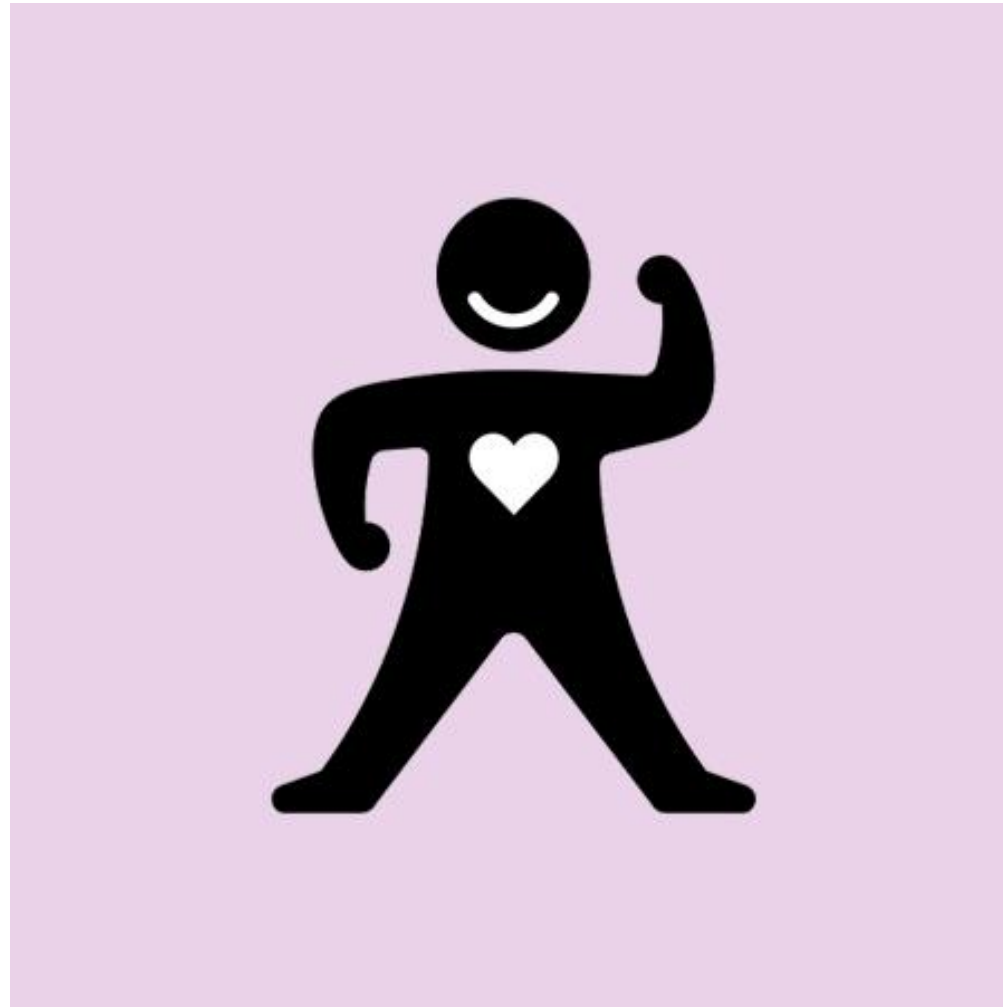
# Pillar of Strong Relationships #1: Respect



# Pillar of Strong Relationships #2: Trust



# Pillar of Strong Relationships #3: Confidence



# Pillar of Strong Relationships #4: Motivation





# Pillar of Strong Relationships #5: Self-Awareness





NATIONAL STUDENT  
SUPPORT ACCELERATOR

*equalizing access to quality tutoring*

**For more information, access the  
complete collection of National Student  
Support Accelerator tutoring tools at:**

**<https://studentsupportaccelerator.org/>**

# Slide-Specific Links

- Slides 2 and 3: Facilitation-  
<https://studentsupportaccelerator.org/tutoring/instruction/session-facilitation>
- Slide 4-9: Relationship Building -  
<https://studentsupportaccelerator.org/tutoring/instruction/relationship-building>