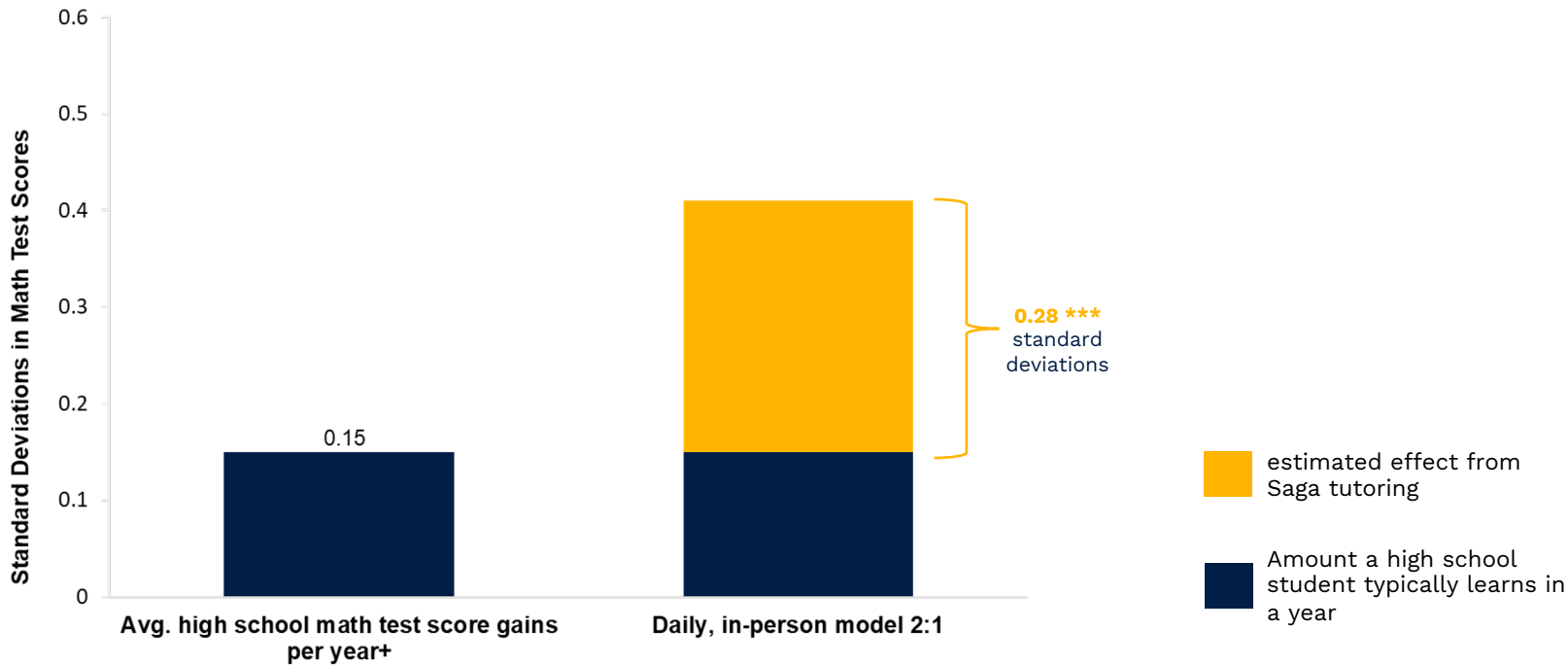




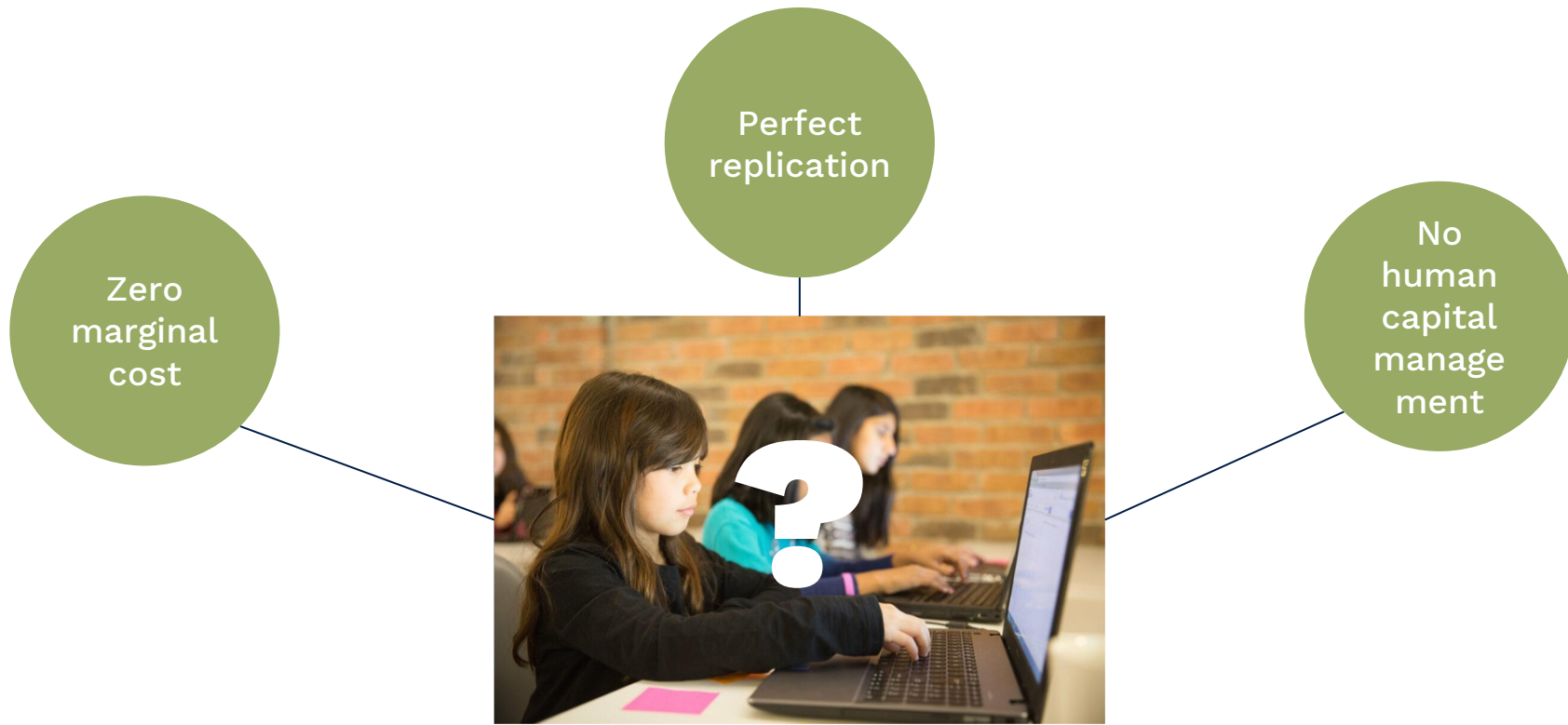
Blending Tutoring with Technology

May 9 2023

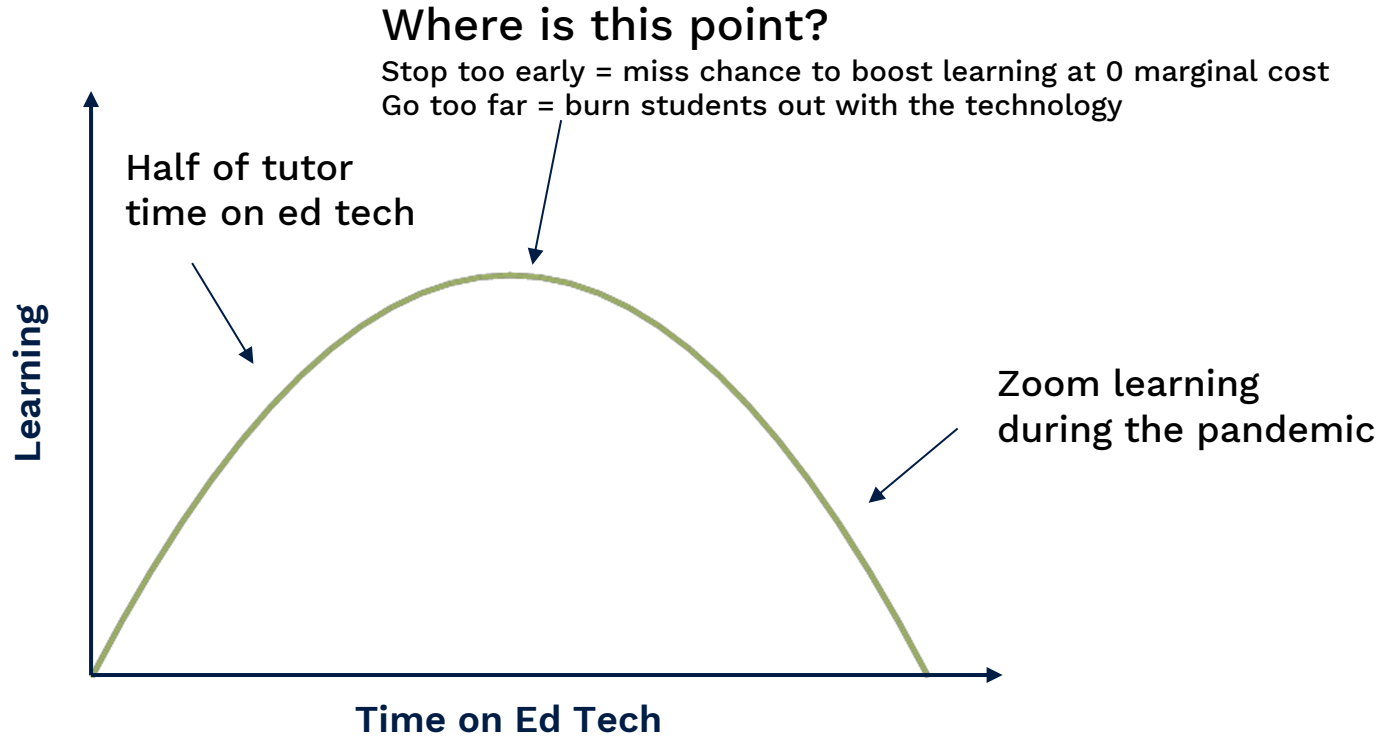
Research Suggests High Impact Tutoring Can Dramatically Accelerate Student Learning



There is a Way to Perfectly Scale Individualized Instruction...



But We Know There Are Limits to Technology



**How far can we go
without compromising
effectiveness?**

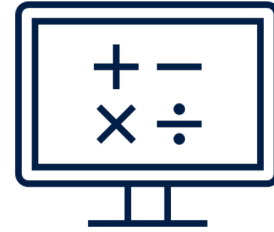
Two Levers to Scale High-Dosage Tutoring and Reduce Costs

1



Increase number
of students to
tutors

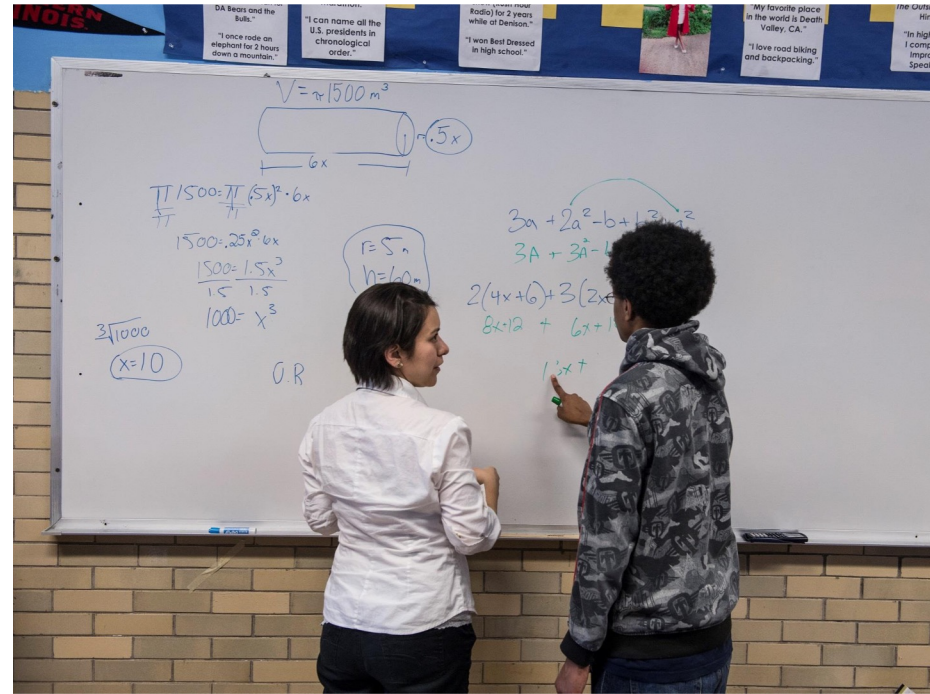
2



Lean on ed-tech
platform

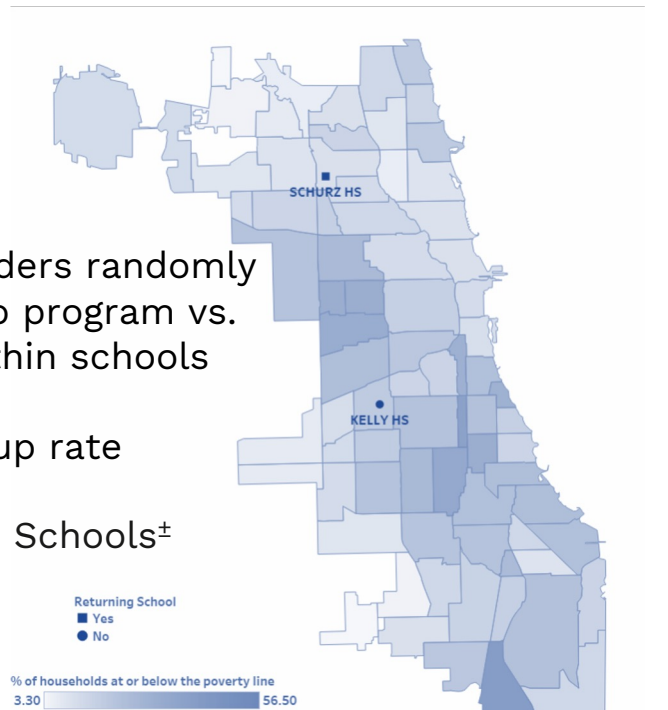
Saga Education's Blended Learning Intervention

- Students attend Math Lab daily
- 2:1 → **4:1 Student: Tutor Ratio**
- **Every alternate day spent on CAL platform (ALEKS)**
- **Cost per student: \$1,900 - \$2,500** or **~30% - 50% less** than 2:1 Saga HDT model



Saga Tech Study Schools Across Chicago & NYC (Y1)

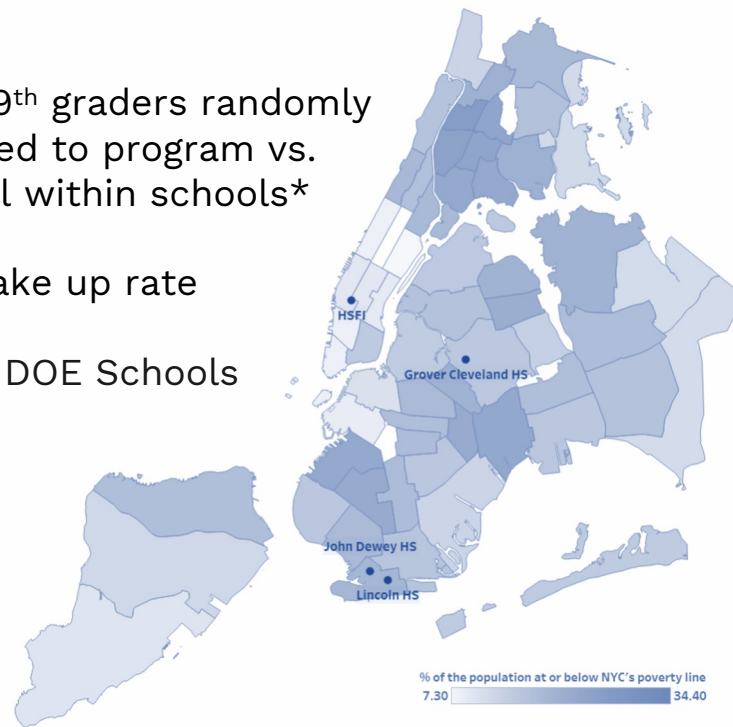
- **821** 9th graders randomly assigned to program vs. control within schools
- **65%** take-up rate
- **2** CPS High Schools[±]



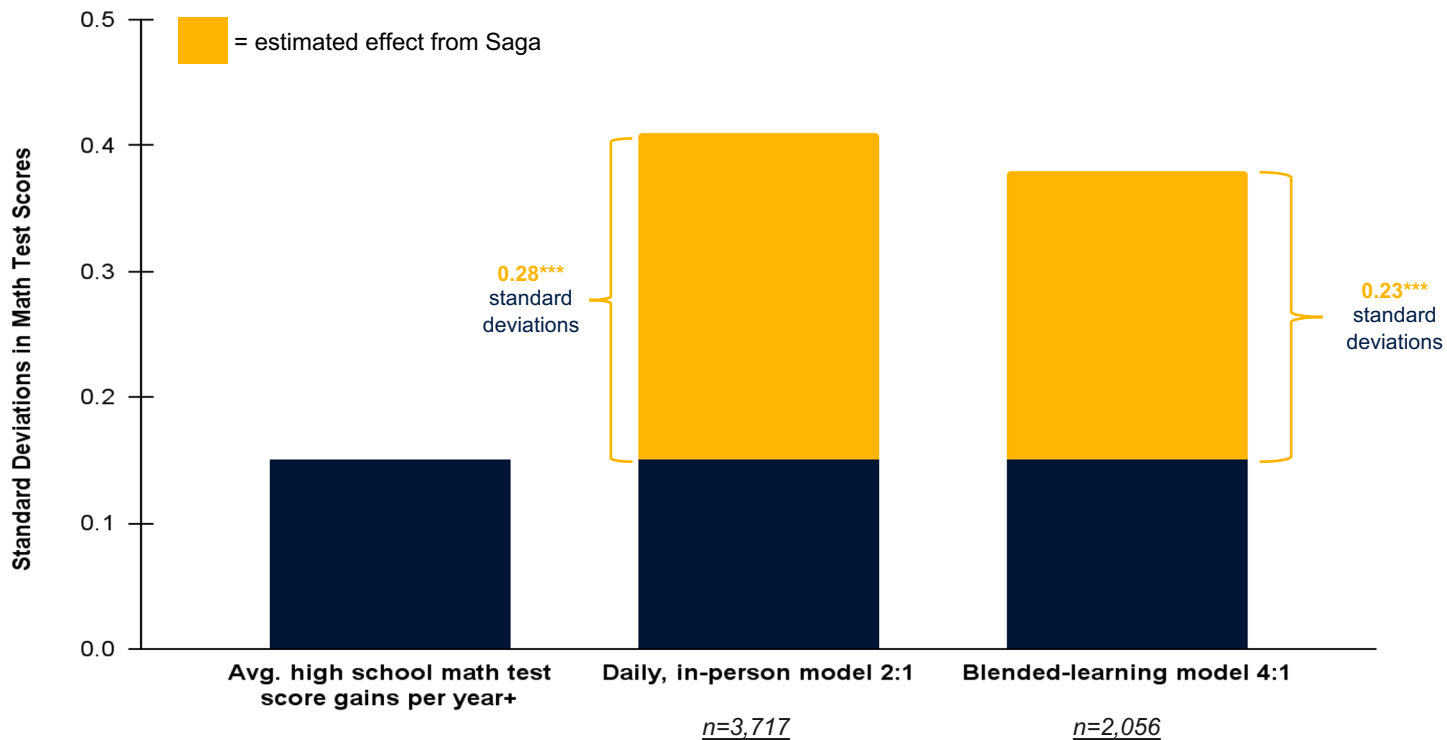
[±] For Study Year 2 (AY2019-20), a 3rd CPS School (Morgan Park HS) was added to the study

* Note that, for NYC, random assignments were recommendations that school administrators could follow, or not follow, at their discretion

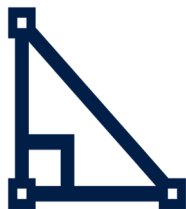
- **1,244** 9th graders randomly assigned to program vs. control within schools*
- **85%** take up rate
- **4** NYC DOE Schools



Effects Are Comparable to Prior Study



We Also Find Important Effects on Other Outcomes:



22% reduction
in math course failures



.24 point increase
in math GPA